



IWG News

The Newsletter of the Island Woodturners Guild

May 2020



About the IWG :

The [Island Woodturners Guild](#) meets from 1:00 - 4:00 PM on the 4th Saturday of each month (except for July/Aug) at the Central Saanich Senior Citizens' Centre, [1229 Clarke Road](#), Brentwood Bay, BC.

Visitors are welcome.

Executive Committee

President:
Tim Karpiak

Vice President:
Vik Peck

Secretary:
Michael McEwan

Treasurer:
Peter Pardee

Member at Large:
Emma Banner

Member at Large:
John Kilcoyne

Member at Large:
Virginia Lee

Past President:
Steve Werner

Newsletter Editor:
John Kilcoyne

The IWG gratefully acknowledges the support of the following companies:

[Artisan Wood to Works](#)
[Chipping Away](#)
[Industrial Plastics & Paints](#)
[Island Blue Print](#)
[KMS Tools](#)
[PJ White Hardwoods](#)
[Richelieu Hardware](#)

THE PRESIDENT'S TURN

[The following is an excerpt from the President's Report at the AGM.]

As our year ends, we find ourselves in a situation that the Guild has never seen in its thirteen-year history. It really is unprecedented.

Our year started out with the second exhibition and show at Tulista Park gallery (ArtSea). The number of members that exhibited pieces increased from the previous show and it was a great success. We had many people remark on how much they admired the craftsmanship. Vik did a ton of work organizing the event. As did so many people. I hope that the volunteers and demonstrators had a good time.

We had Eric Lofstrom from Washington state in the fall. The all-day demo was very entertaining and the workshop I attended was fantastic. I am sure that Eric converted most of us on negative rake scrapers. Once again, there were many people who worked on this and I thank you. Thanks also to our local demonstrators. Their skills, instruction, and humour are so entertaining and informative. And all the people that quietly do the various duties that keep our Guild running as smoothly as it does. If it wasn't for them, we wouldn't have a Guild.

Our Christmas party was as fun as always. I look forward to this event every year. It's fun to see what our partners are making as well. And did I mention the treats and punch?

And now, even though we are limited in the interactions we can have, we are adapting. We are planning a number of live remote demonstrations in the future.

As you will see, we're in a good position financially, we will be retaining our meeting space and hopefully after the summer break things will look much brighter.

Finally, thank you to the Executive. It's been a trying year and I think we've done quite well in spite of the difficulties. And we will continue to do so. Thank you to everyone involved with making our Guild the success it is. I look forward to seeing everyone person.

NEXT (ZOOM) MEETING: SATURDAY MAY 23: 1:00 p.m.

While we are unable to meet in person, Vik Peck has agreed to provide a live remote demonstration on **Finishing** which you can enjoy from the comfort of your home.

Log in details to the Zoom platform will be provided by email.

NOTE: If you are not familiar with Zoom, please feel free to contact either Tim Karpiak or Virginia Lee for a trial lesson.



JUNE (ZOOM) MEETING: MIKE MAHONEY DEMONSTRATION

Our meeting date on Saturday June 27th will feature a live remote demonstration by Mike Mahoney.

NB: THIS SESSION WILL BEGIN AT 9:00 A.M.

While Mike produces a range of impressive turnings, he is best known as one of the finest bowl turners in the U.S. A professional woodturner since 1994, he had been a frequent demonstrator at AAW symposia as well as clubs throughout North America and Europe



The topics covered will include:

Tool design and grinding
Thread chasing
Bowl turning
Hollow forms and urns
Wood finishes

Bowl Coring
Oak Platters
Shear scraping
Pepper Mills
Drinking cup

Log in details to the Zoom platform will be provided by email.

FUTURE MEETINGS

While no one can predict what the future holds, the Executive believes that it is highly unlikely that we will be able to resume in-person meetings anytime before January 2021. Even if approval is given for large scale meetings before then, in light of our member's demographics it is our view that many would choose not to attend.



Accordingly, the Executive is working on developing live remote demonstrations for our meetings next fall. We hope to have two external demonstrators - likely in September and November. Once confirmed, plans for the October meeting will be developed.

YOUR NEW(?) EXECUTIVE

After a raucous campaign which generated as much excitement as the Tory leadership campaign, the current Executive members were all acclaimed. In case you had forgotten, they are:

President	Tim Karpiak	Vice-President	Vik Peck
Treasurer	Peter Pardee	Secretary	Mike McEwan
Members at Large	Emma Banner,	John Kilcoyne	Virginia Lee
Past President	Steve Werner		

SPRING CHALLENGE

The spring challenge is to create an **innovative** hollow form. Get creative!

Please submit photos of your work to the webmaster (remoteva@gmail.com) prior to the June meeting for posting on the Guild website.



The turner of the most creative form will receive one roll of Charmins Ultra Soft!!!!

INSPIRATION: DUSKY'S WORLD OF WONDERS

With too much time on my hands, I have been visiting some quirky websites. (No, not ones with leather and whips). One of these is **Dusky's World of Wonders** which consists of photographs which in the creator's words reveal "*.. discoveries about our planet, its inhabitants and the universe that I have found to be awesome, funny, or just plain weird.*" (<http://www.duskyswondersite.com/>)

The photos are organized around a number of major themes such as *Animals*, *Cosmic*, *Human Ingenuity* and *Nature*. Under each of these, are a variety of sub-headings. While they are all "visually entertaining", I found that many of the photographs – especially those marshalled under the *Nature Wonders* heading – may also offer inspiration for turnings in terms of form, colour and embellishment.

I would particularly recommend the following sets of photographs:

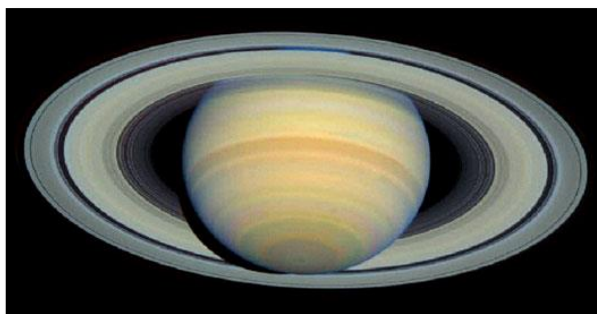
Natural Wonders

Sea Life: <http://www.duskyswondersite.com/sea-creatures-category/sealife-2/>



Cosmic Wonders

Cosmic Wonders:
<http://www.duskyswondersite.com/cosmic-category/cosmic-wonders/>



Earth, Moon and Stars:

<http://www.duskyswondersite.com/cosmic-category/earth-moon-and-stars/>



Even if you are not interested in inspiration, you may want to check out the photographs of some amazing trees under the heading of Natural Wonders: Trees.

These can be found at:

<http://www.duskyswondersite.com/nature/trees/>)

TURNING A WALL HANGING (OR HOW I SPENT MY FIRST WEEK BEING SOCIALLY DISTANT)

[In the last newsletter I asked for volunteers willing to discuss their recent turnings. I have concluded that the deafening silence was a plea for me to talk about one of my efforts.]

1. The Project

Since virtually every flat surface in our house is filled with turnings, I decided to turn a wall hanging. Over a year ago, I obtained a few yellow cedar burls and decided to use one of these for this project. The dimensions were 9" x 15".

2. Preparing the Blank



The blank was surprisingly flat on the face side so there was no need for any belt sanding. However, it did have a very deep inclusion with some surrounding punky wood which posed an obvious safety risk (Photo: left). To strengthen the join, I used West System epoxy.

Notes

a. For hardener, I used West 206-A (Slow Hardener) which cures in 10 – 15 hours. In most cases, slow set epoxy offers relatively little improvement over fast set epoxies. In either case, the wood will generally fail well before the epoxy joint.



However, in this case, the slower cure rate would allow the resin to penetrate deeper into the inclusion. To enhance this, I used a heat gun to warm the inclusion area before applying the epoxy. This served to reduce the viscosity of the resin which improved saturation.

b. Rather than using my standard go-to of coffee grounds, I used some black dye (ColorFX Dye Concentrate from Wood Essence) to colour the epoxy.

(While not relevant to this application, this is a metal-complex liquid dye which is more fade resistant than powdered aniline dyes and, when mixed with denatured alcohol, raises the grain minimally.)



3. Mounting the Blank



I secured a 3" faceplate to the face of the blank.

Notes

a. For safety, most sources recommend using a face plate that is approximately 1/3 the diameter of the blank. However, this would mean that to remove the screw holes, I would have to turn a larger "bowl" than I wanted. I chose instead to compensate by turning at a slower speed.

b. For securing the faceplate, I used #10 metal screws in every hole. They are not only stronger than conventional wood screws but also have a coarser thread which provides better holding power.

c. The screws were 1.25" long which meant they had approximately $\frac{3}{4}$ " of penetration into the wood.

4. Stretch Wrap

As I was unable to see how well the inclusion had been filled, I opted to apply 3 turns of stretch wrap around the outside of the blank in case it separated.



5. Facing the Back

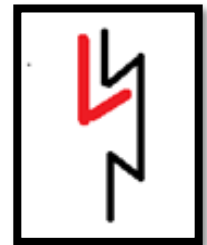
With the tailstock engaged, the back of the blank was faced using a ½" bowl gouge.



Given the configuration of the blank, at the outside edge I was turning 99% air. In order to provide a point of reference, I made a mark on the tool rest showing the location of the outside edge (Photo: left). Since it was impossible to ride the bevel, I made a concerted effort to anchor the tool firmly to the tool rest and to maintain a constant distance and tool angle to the blank.

A ruler was used to check that the surface was flat.

The tailstock was then removed, and a recess was cut in the centre for mounting in a chuck. Since this recess would also serve as a mounting bracket, I angled the walls of the recess (black: exaggerated angle) to produce a more secure fit on a wall hanger (red).



The wood around the recess was somewhat weak which was a concern as it would be mounted in expansion mode. Accordingly, I applied a few coats of CA glue to strengthen it.

6. Facing the Front

The piece was then reverse mounted in the chuck and the tailstock was engaged. After once again placing a mark on the tool rest to indicate the edge of the blank, a ½" bowl gouge was used to face the front.

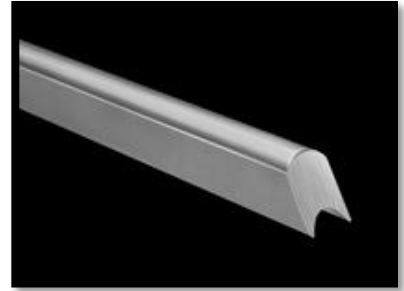
As an unbalanced blank, the maximum turning speed was approximately 500 rpm. While this would normally be sufficient for a good finish, small punky areas throughout made it difficult. Accordingly, I applied a coat of PC Petrifier Wood Hardener (Home Hdwe: \$18) which worked well.



Note: At one of our meetings, Tim Soutar noted that as this product alters the colour of the wood, it should be applied to the entire surface which I did.

7. Turning the Bead and Bowl

The beads were turned using a 3/16" beading tool from D-Way Tools. It is used in a "flute-down" position with a slight rocking motion.



Note

These tools are available in sizes 1/16", 1/8", 3/16", 1/4" and 3/8". (US\$50 each). They perform exceptionally well for those who are "skew-challenged". You can see these tools in use at: https://www.youtube.com/watch?time_continue=41&v=ZgBn5YLOqvA&feature=emb_title

The tailstock was then removed, and the bowl portion was turned using a 1/2" bowl gouge. An additional coat of wood hardener was required as more punky wood was encountered. (I used a very thin coat so that it would not inhibit the penetration of Tung oil which was my chosen finish.)

The bowl portion was sanded to 400x on the lathe. Given the irregular configuration of the turning, the balance of the face and back were sanded off the lathe using a random orbital sander.

8. Finishing



In order to "pop the figure" in the burl wood, I decided to use an oil finish, namely Mohawk Tung Oil (Modified) which is a proprietary blend of Tung oil and pro-polymerized alkyd resin. (Richilieu).

Since I wanted a semi-gloss finish, I applied 4 coats. I let the oil penetrate for approximately 10 minutes and then removed all excess oil. This is crucial. If excess oil is allowed to dry, it is virtually impossible to remove without re-turning the piece.

Note

Graeme Evans provided valuable advice concerning the many worm holes throughout the face.

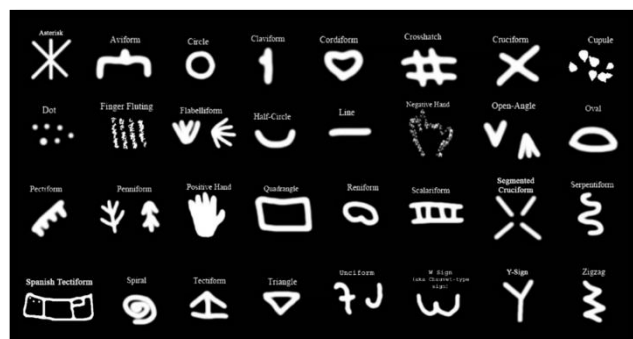
Firstly, he indicated that it was important to remove all of the wood residue (“worm poop” says he) from the holes. Otherwise, these would absorb more of the oil and show up as dark spots on the finished piece.



The other piece of advice concerned oil collecting in the worm holes. He recommended using compressed air to blow any excess oil from the holes.

9. Pyrographic “Doodlings”

For reasons that I cannot explain, the figured surface of the piece reminded me of the inside of the “rock art” caves that I have visited in France. Accordingly, I chose to add the 32 paleolithic symbols which have been identified by Uvic paleontologist Genevieve von Petzinger, some of which date back to 37,000 BCE.



10. The Finished Piece



"STEAM PUNK BALL MACHINE"



Steampunk art, which emerged in the 1980's, is a form of "nostalgic futurism" that incorporates technology and aesthetic designs inspired by 19th century steam-powered machinery. In many cases, it is influenced by and adopts the images of machinery described in the works of Jules Verne and H.G. Wells.

The piece shown here was made by noted turner Bud Hohlfield of Pennsylvania.

For a detailed description of how it was produced, see his article in the April 2020 Newsletter of the Bucks Woodturners at:

<https://us9.campaign-archive.com/?u=50cc91b70d2b3ee0764e515b7&id=821405a150>

BANNER'S BOWL

One of the many perks of editing the Newsletter is that I get to include photo of turnings that I particularly like.



This live-edge bowl is one which Emma Banner showed at a recent Group 5 Zoom meeting. Turned green, this footed elm bowl measures 12.5" x 8.5". She reports that sanding it was a nightmare.

An impressive piece of work in terms of form, colour and grain orientation. And I really like the contrast between the rough top edge and the elegant feet. A real beauty!



PARTING OFF

Special thanks this edition goes to the members of the Executive for their willingness to stand for another term. Many thanks to Tim, Vik, Peter, Mike, Virginia, Emma and Steve!

CONCLUDING THOT

Picked up a hitch-hiker. Seemed like a nice guy.

After a few miles, he asked me if I wasn't afraid that he might be a serial killer?

I told him that the odds of two serial killers being in the same car were extremely unlikely